

IQN ActiveCharts Installation Guide

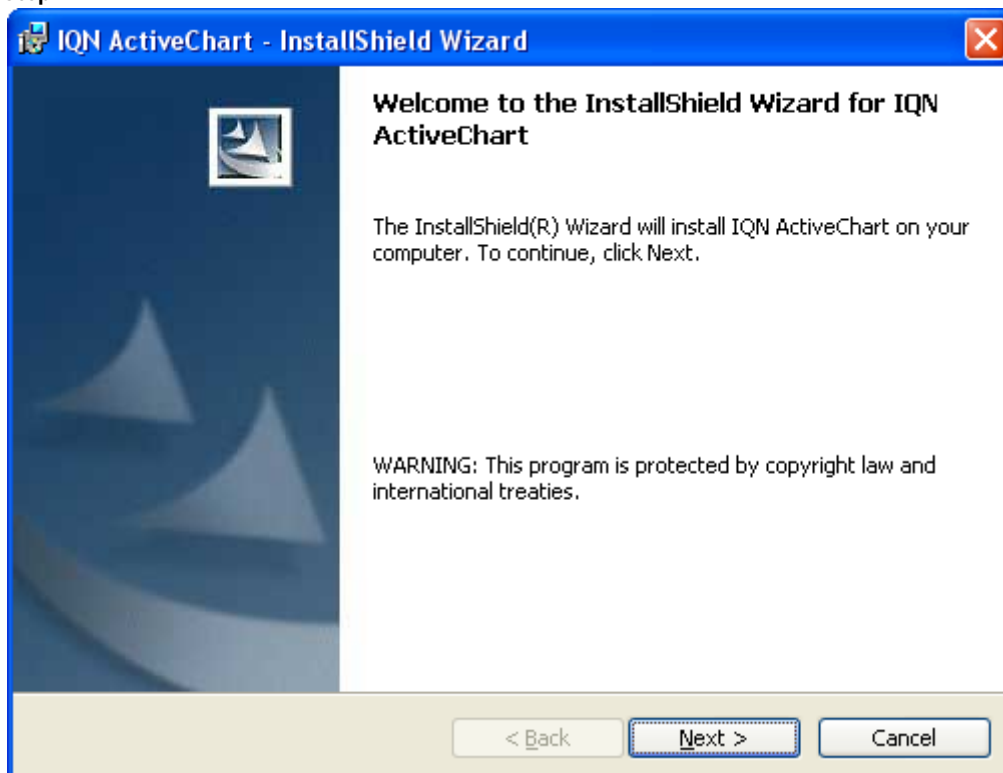
1. Installation of **IQN ActiveCharts** may require administrative access to your PC, which is normally provided by your IT department. For the installation to succeed, you may be asked to close all open applications during the installation.
2. Save the setup file to your local disk.
3. Wait until the setup file will be downloaded from Internet and stored on your local computer.
4. Launch the setup file.
5. The following message window can appear:



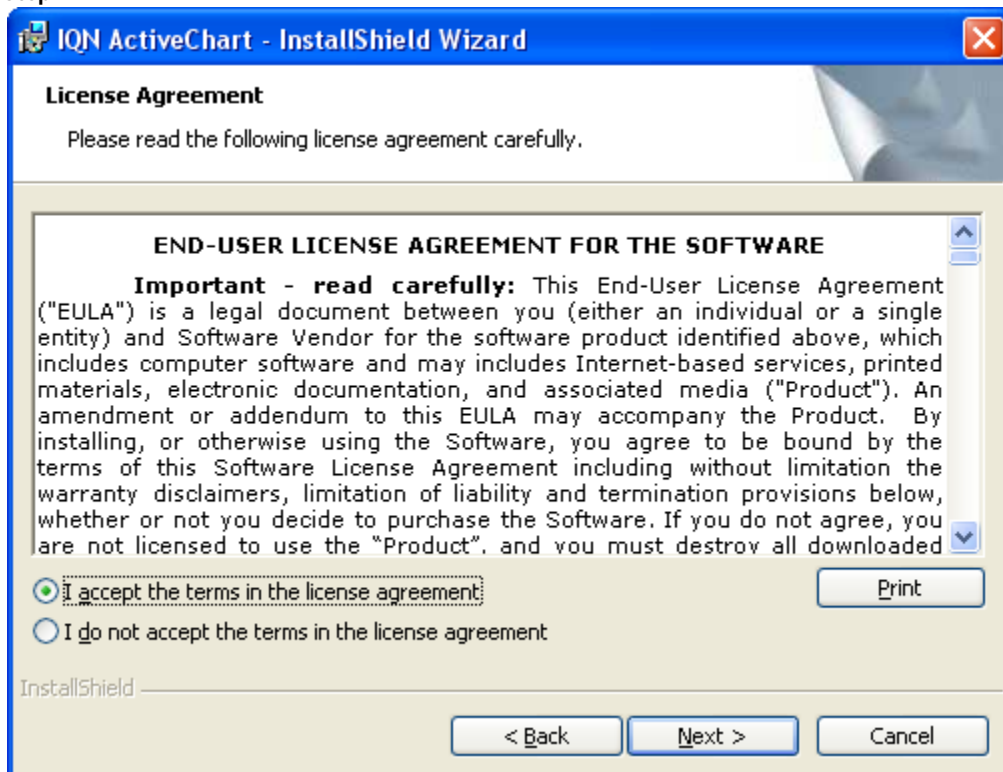
It means you have installed the previous version of IQN ActiveCharts.
To avoid this issue please open a Add/Remove Programs in Control Panel
and uninstall IQN ActiveCharts. Launch the setup file again.

6. The setup wizard appears and helps you to install the product

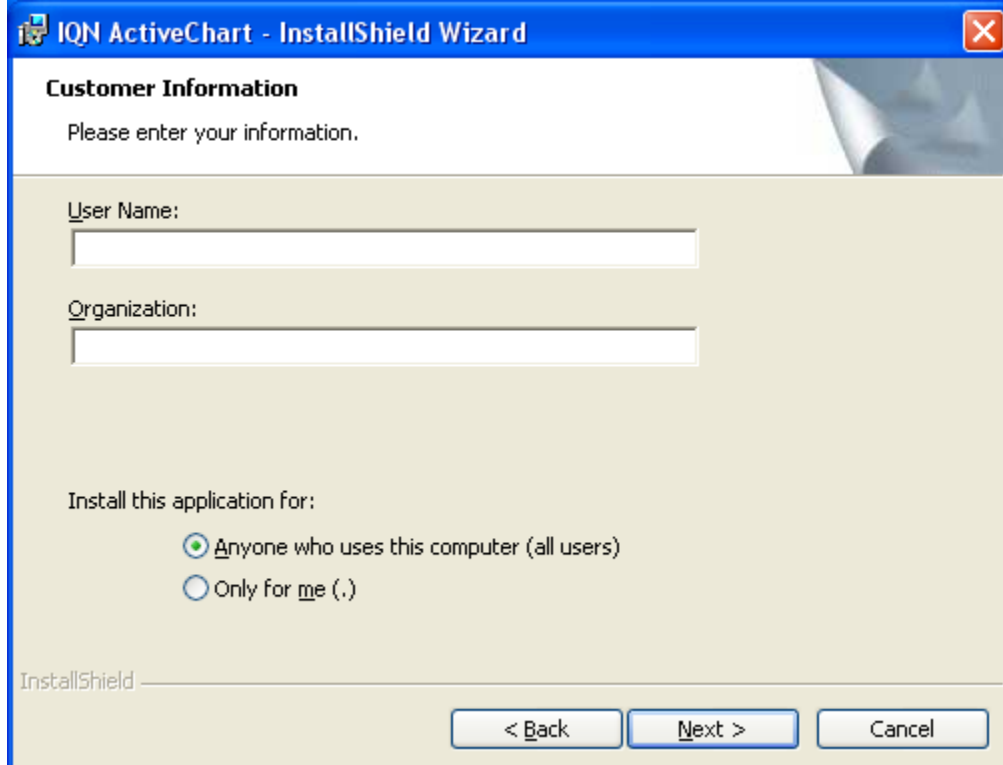
Step 1



Step 2



Step 3

A screenshot of the "Customer Information" step in the IQN ActiveChart installation wizard. The window title is "IQN ActiveChart - InstallShield Wizard". The main heading is "Customer Information" with the instruction "Please enter your information." Below this are two text input fields: "User Name:" and "Organization:". Underneath the fields is a section titled "Install this application for:" with two radio button options: "Anyone who uses this computer (all users)" (which is selected) and "Only for me (.)". At the bottom of the window, there are three buttons: "< Back", "Next >", and "Cancel". The "InstallShield" logo is visible in the bottom left corner.

Customer Information
Please enter your information.

User Name:
[Text Input Field]

Organization:
[Text Input Field]

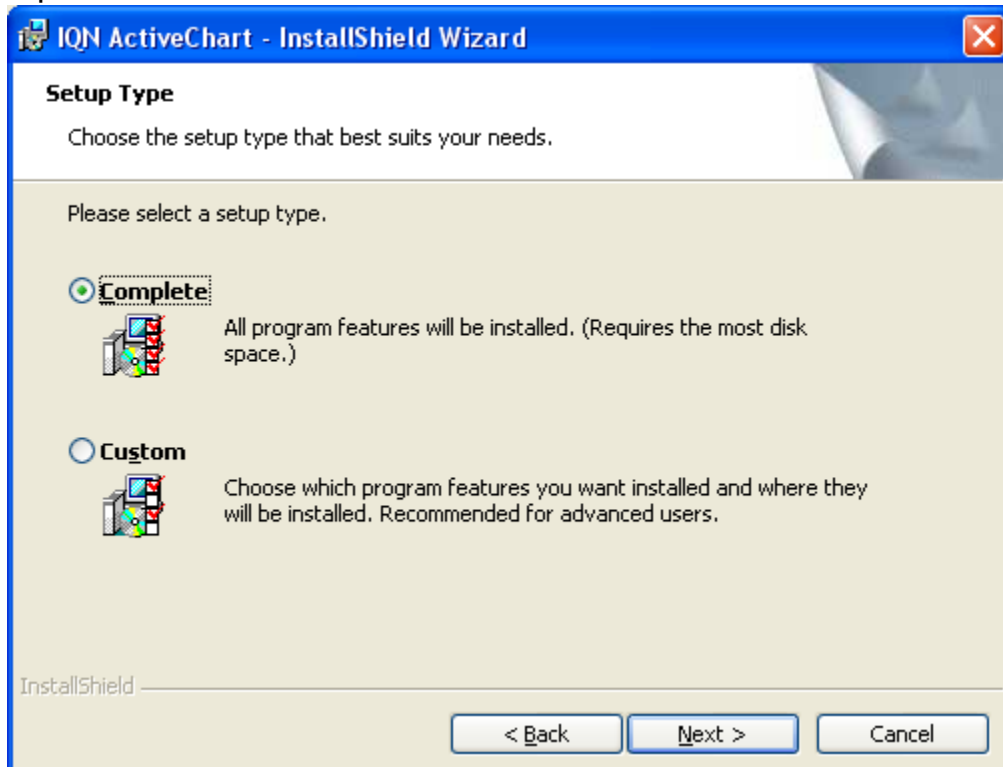
Install this application for:

- Anyone who uses this computer (all users)
- Only for me (.)

InstallShield



< Back Next > Cancel

Step 4

A screenshot of the "Setup Type" step in the IQN ActiveChart installation wizard. The window title is "IQN ActiveChart - InstallShield Wizard". The main heading is "Setup Type" with the instruction "Choose the setup type that best suits your needs." Below this is the text "Please select a setup type." There are two radio button options: "Complete" (which is selected) and "Custom". Each option has a small icon of a computer tower and a description. The "Complete" option states "All program features will be installed. (Requires the most disk space.)" The "Custom" option states "Choose which program features you want installed and where they will be installed. Recommended for advanced users." At the bottom of the window, there are three buttons: "< Back", "Next >", and "Cancel". The "InstallShield" logo is visible in the bottom left corner.

Setup Type
Choose the setup type that best suits your needs.

Please select a setup type.

- Complete**
 All program features will be installed. (Requires the most disk space.)
- Custom**
 Choose which program features you want installed and where they will be installed. Recommended for advanced users.

InstallShield

< Back Next > Cancel

Step 5

